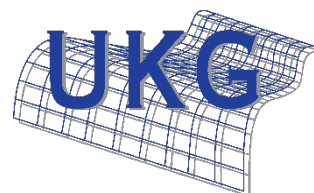


Project Case Study

B & C Towers - Breyer - Affinity Sutton Group



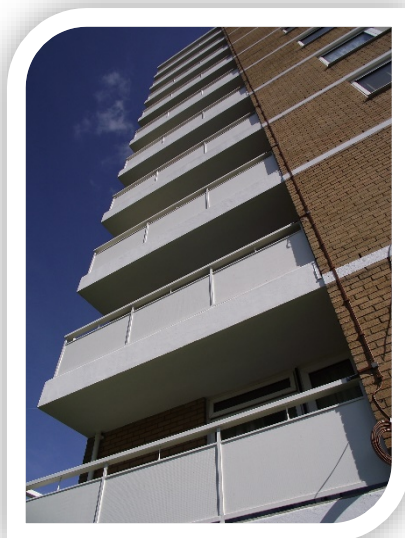
UK GUNITE LIMITED



Beckesbourne and Crundale House are 12 storey 1960's built highrise residential flats situated in Orpington (SE London). UKG initially carried out a detailed survey of all brickwork and concrete surfaces to ascertain requirements of building fabric.

UKG's recommendation was as follows:

- a) Removal of all existing surfaces by means of grit blasting.
- b) Identify, breakout and repair all defect areas of brickwork and concrete.
- c) Application of Sika Ferrogard 903+.
- d) Application of Sika Monotop 620 Levelling Mortar



- e) Application of Sikagard 550W Elastic to concrete
- f) Application of Sikagard 700s Aquastop to brickwork
- g) Application of Sika Premium Balcony system to all private balconies.

All the above was offered with a Sika 15 year Guarantee.



Client

Breyers
/ Affinity Sutton Group

Project Description

Structural refurbishment of occupied residential High Rise flats

Sector

Social Housing

Start

December 2015

Completion

September 2016

Contract Value

£ 850,000

Contract Type

JCT IFC 2011